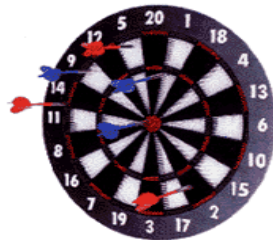


Targets for nuclear physics studies



Anna Stolarz

**Heavy Ion
Laboratory**

What is the target?

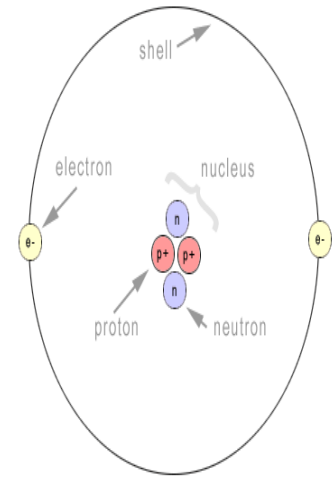


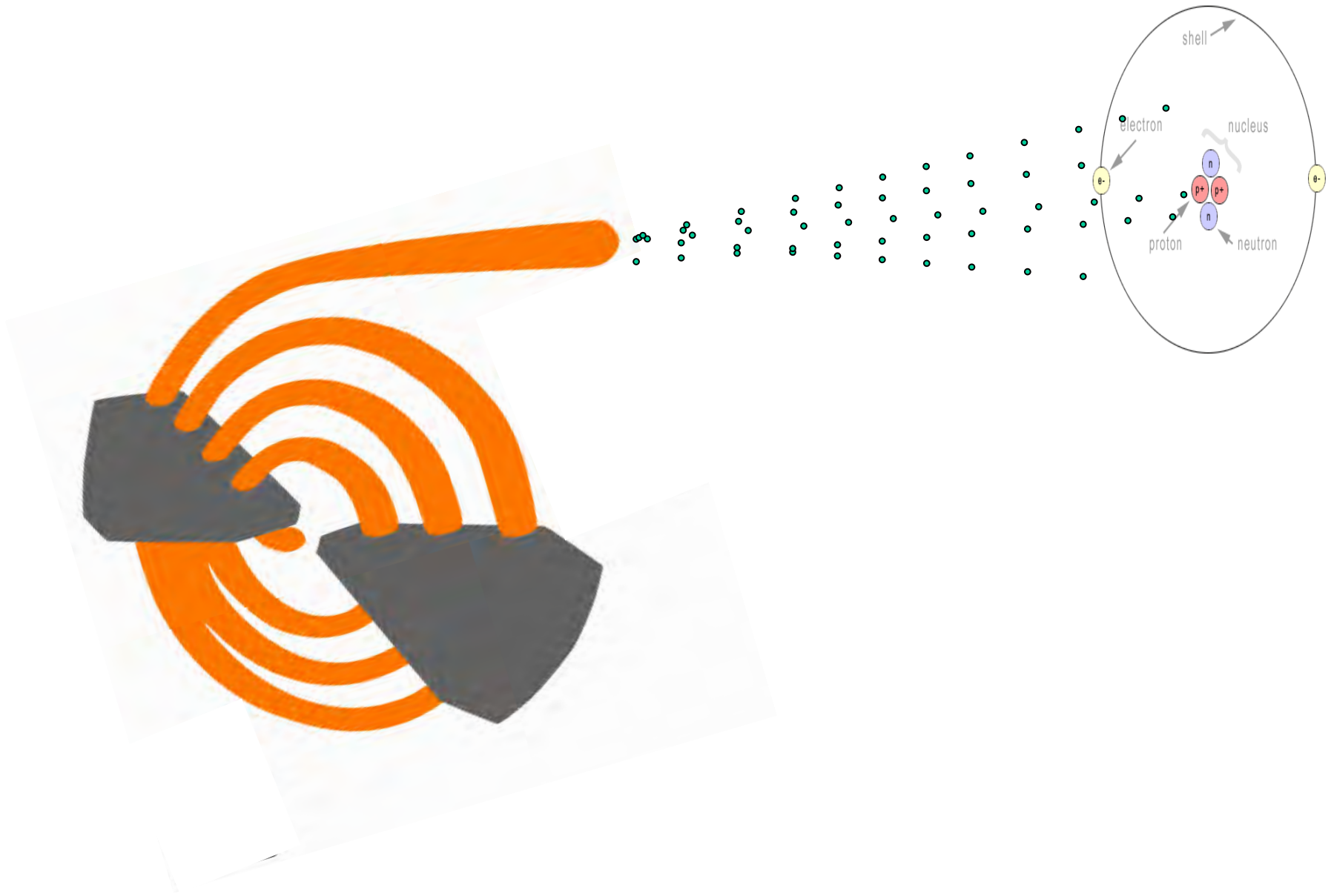
Nuclear reaction is a process in which two, three nuclei or nuclei and particle such as neutron, proton ... collide producing the product other than the initial 'items'.



The artificial nuclear reaction was performed by John Cockcroft and Ernest Walton in 1932. They bombarded the ${}^7\text{Li}$ with 'artificially' accelerated protons. In result the two helium nuclei (α particles) were created.

What is the target?





What is the target?

Gasous or liquid

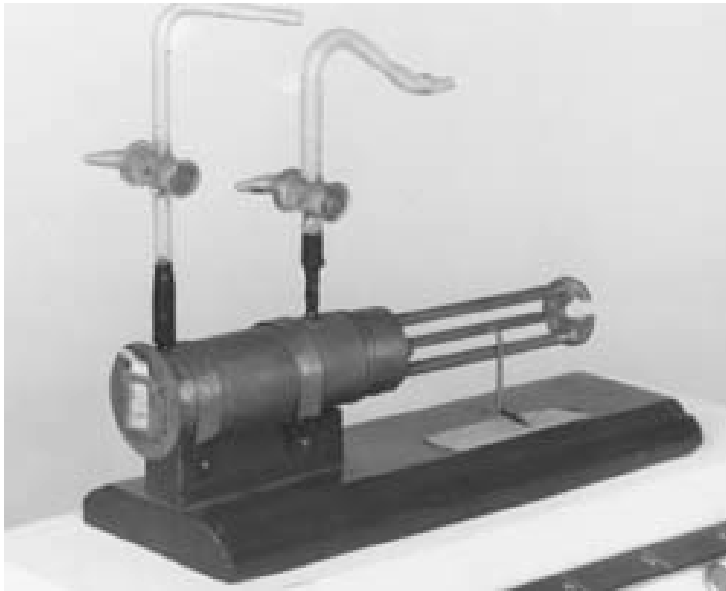
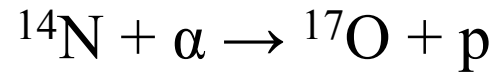
- gas or liquid flow (the melted metals as well)
- material closed in the chamber kept in the low temperature
- in case of gaseous target:
implantation into the solid backing/carrier



Rutherford transmutation

„An anomalous effect in nitrogen,”

the alpha particle (from Polonium which passed through the container with nitrogen gas) and nitrogen nucleus stuck together, with a proton flying loose.

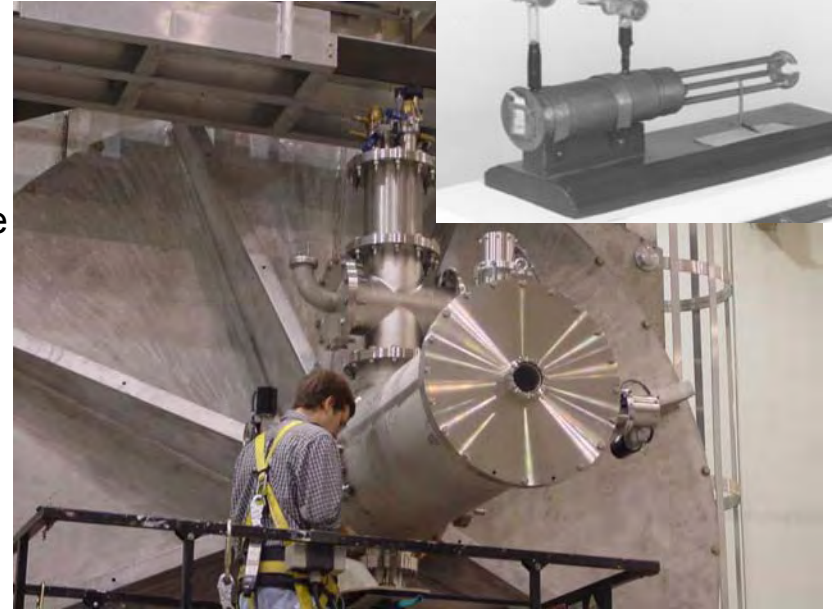


The apparatus used by Rutherford in 1919 for transmutation of nitrogen into oxygen

What is the target?

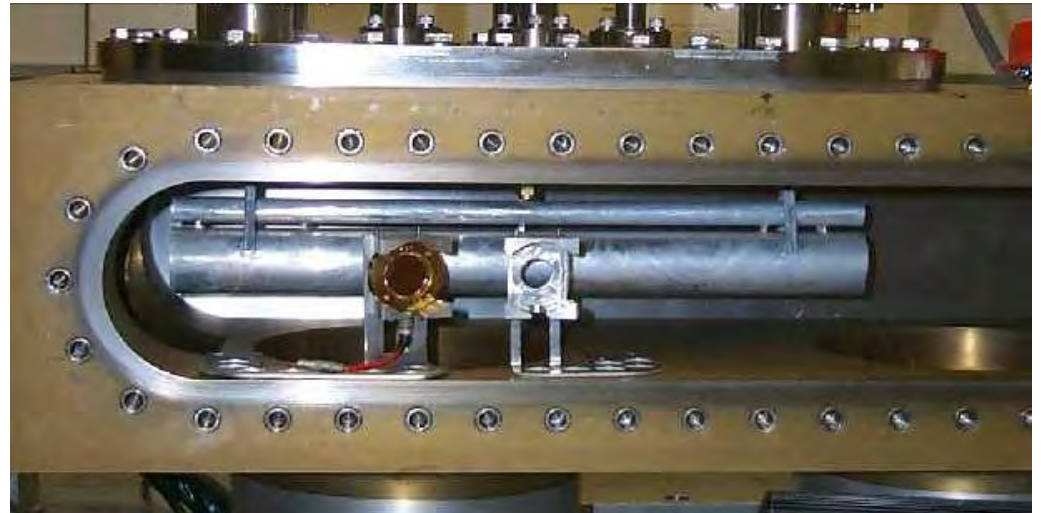
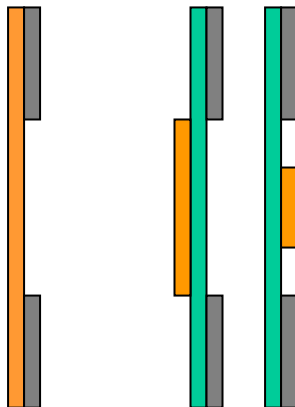
Gasous or liquid

- gas or liquid flow (the melted metals as well)
- material closed in the chamber kept in the low temperature
- in case of gaseous target:
implantation into the solid backing/carrier



Solid targets

- self supporting
- on the backing



How to make the target?

The choice of the method depends on many aspects:

- target form (phase) and characteristics/parameters:
element/isotope, thickness, size
- avoiding unnecessary costs
- availability of the tools/method in the target lab
- effectiveness
- avoiding contamination of the material

Target properties/characteristic

Target material: element-isotope
and its phase: solid, liquid, gaseous

Thickness

Chemical form required and available

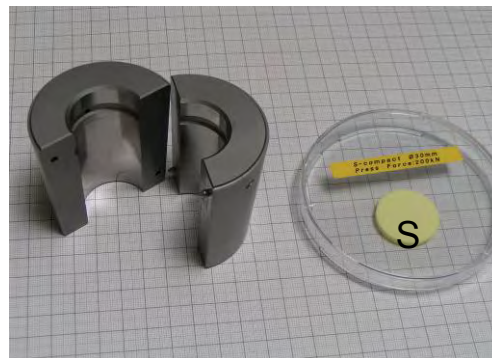
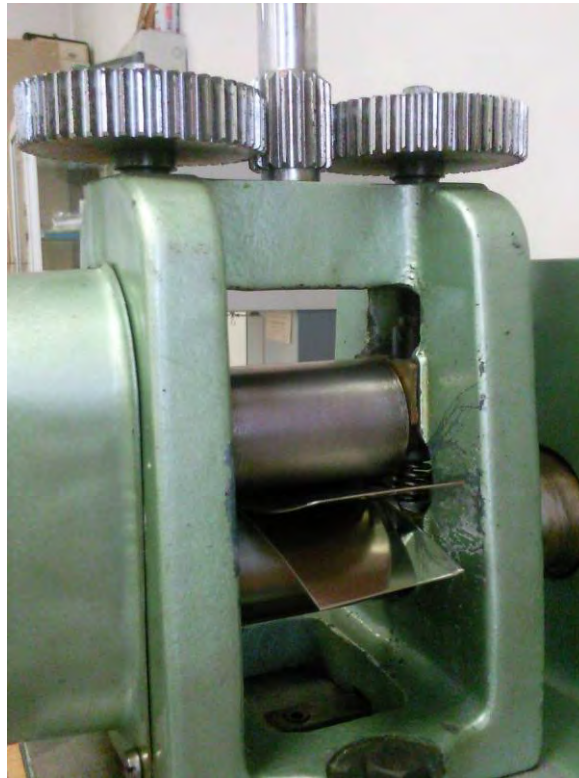
Self-supporting or on the backing

How ???

mechanical shaping:

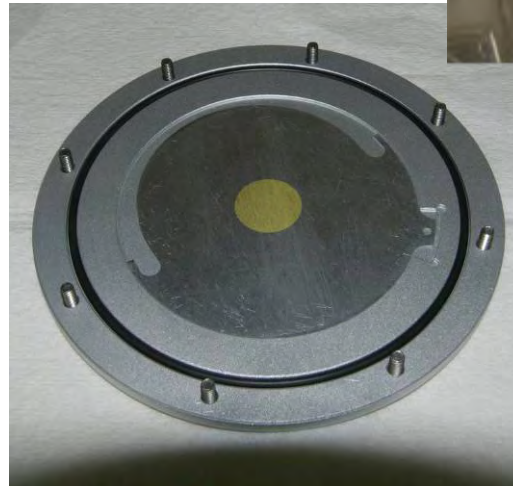
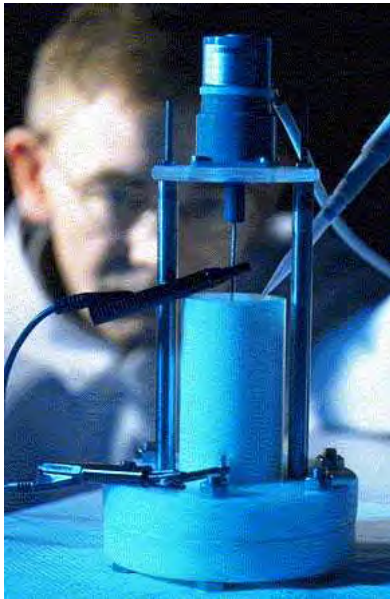
rolling

tablet pressing



How ???

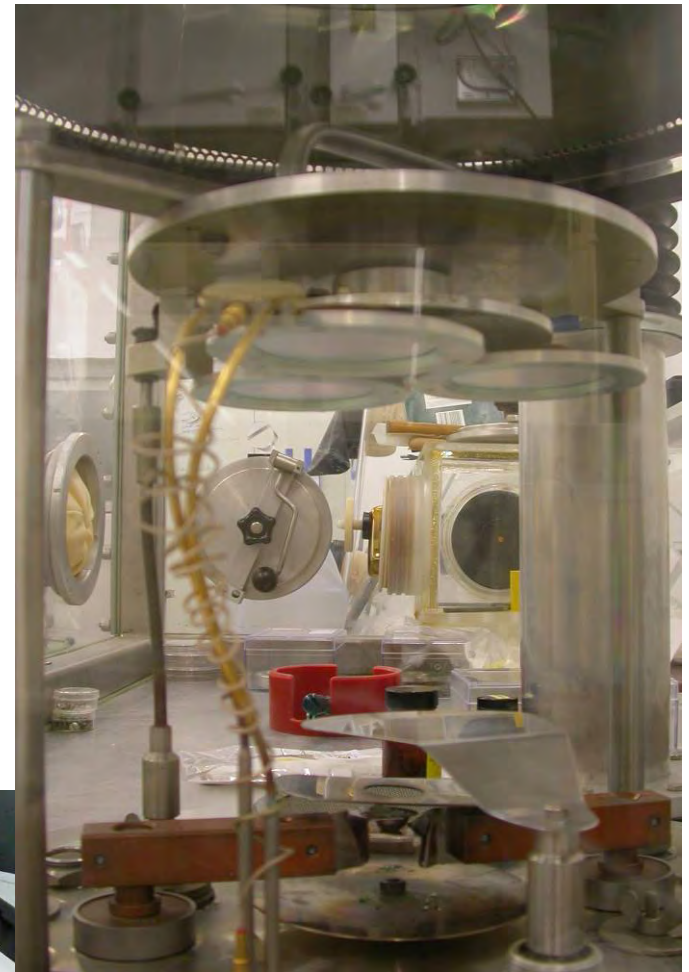
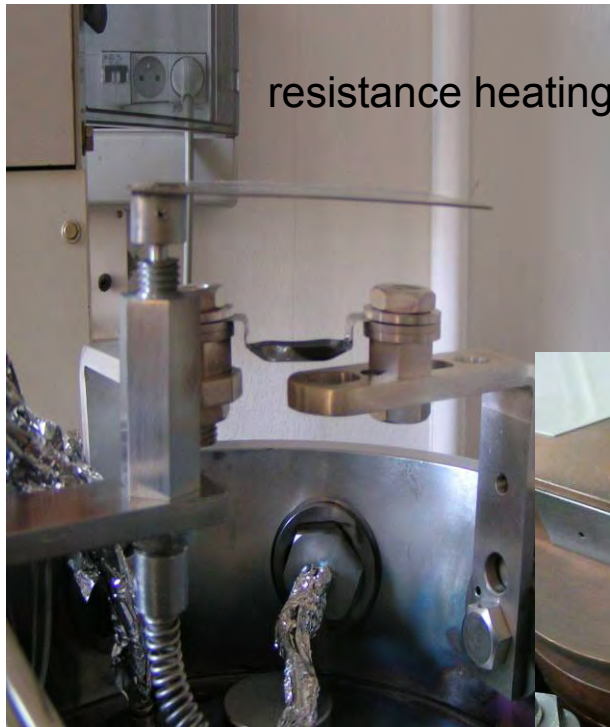
chemically: electro-deposition from hydrous or organic medium
(always on the backing)



How ???

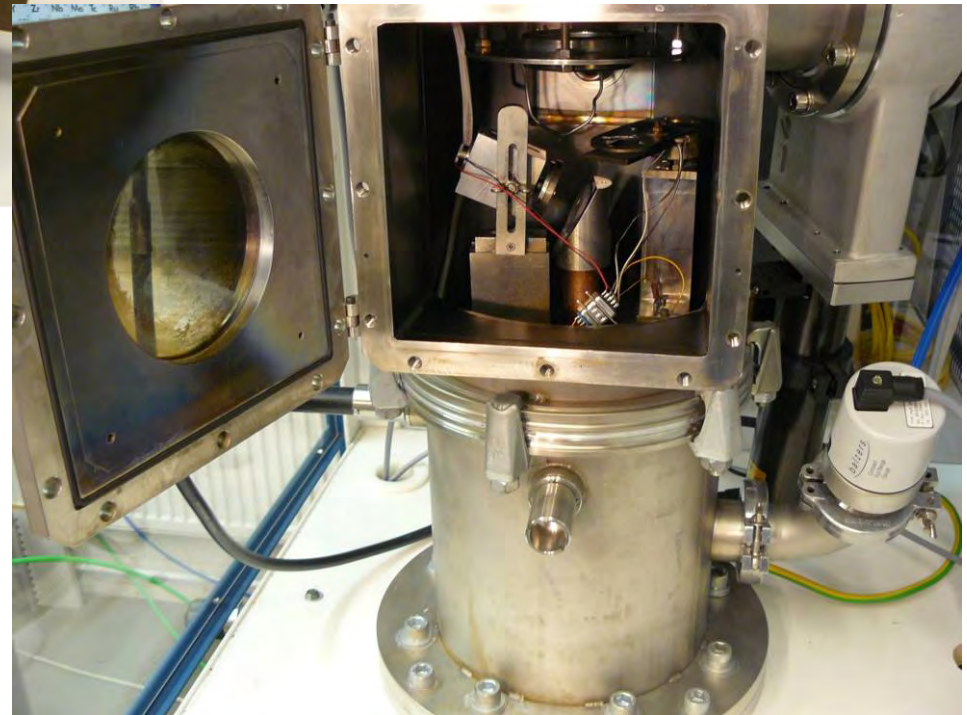
vapour deposition in the high vacuum

- resistance heating
- e-gun
- sputtering





sputtering i.e. target material ejection by accelerated ions of the noble gas



How??

carbon arc
e-gun
laser ablation



Resistance heating

- The method is very simple, robust

but

- limited to the materials of the low melting point (not higher than 1800 °C)
- and not alloying with the boat material.

E-gun

- The method is more complex, but extremely versatile.
- Can achieve temperatures in excess of 3000°C.
- Use evaporation cones or crucibles in a water cooled copper hearth.
- Typical emission voltage is 8-10 kV.

but

- Exposes substrates to secondary electron radiation.
- X-rays can also be generated by high voltage electron beam

Sputtering

- The method can be applied to the most of the materials except those which can degrade due to ionic bombardment
- This technology allows to release the deposited material at much lower temperature than evaporation.
- gives easy film thickness control via time, allows alloy deposition, no x-ray damage

but

- requires rather big surface of the sputtered material to avoid bombarding of the cathode material.
- There is as well big chance for the impurities incorporation due to low vacuum.

How to make it?

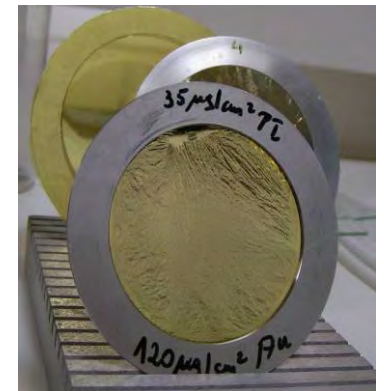
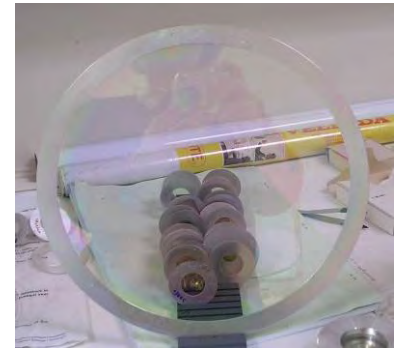
on the backing or self-supporting

backings

thin metal foils

carbon foil

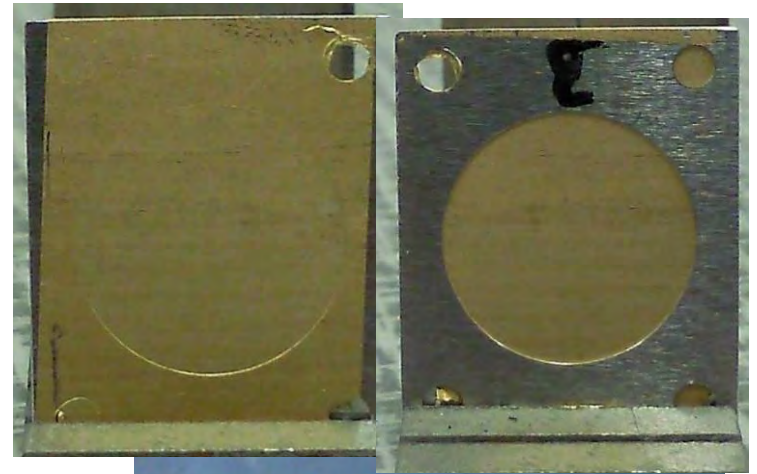
plastic: Mylar, Kapton, Formvar



How???



self supporting



Target characterisation

Thickness:

(mass/area i.e. g-mg- μ g/cm²)

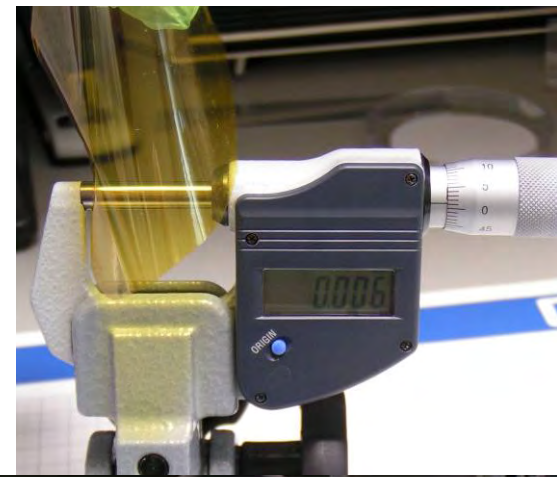


$$1 \text{ b } (\sigma) = 10^{-24} \text{ cm}^2$$

it's approx. the sectional area of the U nucleus

Thickness estimation: mass/area i.e. g-mg- μ g/cm²)

- * mechanically i.e. caliper, micrometer (screw??)
- * weighing the defined area
- * in-situ during the vapour deposition process using the quartz microbalance
- * spectrophotometrically
- * measurement of the α particles or X-ray energy loss
- * profilometers
working in a contact or non-contact modes

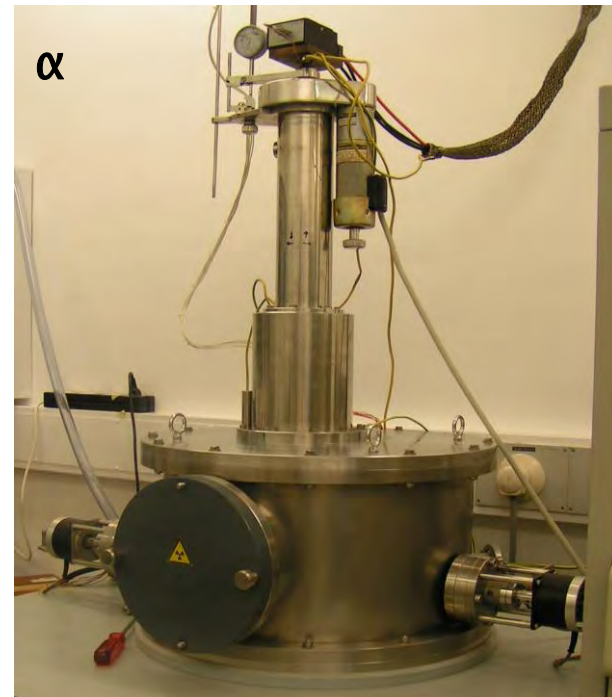


Thickness estimation of the radioactive targets:

if made by evaporation: during preparation with quartz microbalance

ready target: measurements of the radioactivity

thickness homogeneity by radioactivity scan across the target area



Target characterisation

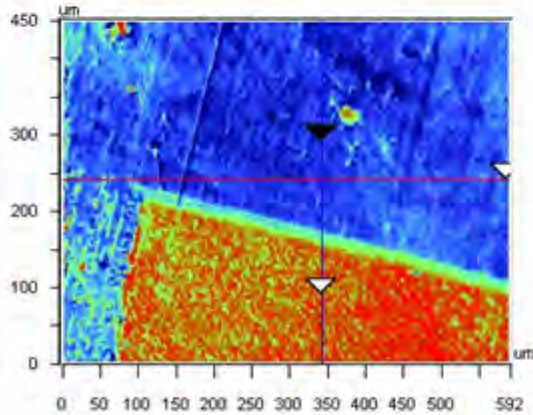
Thickness: (mass/area i.e. g-mg- μ g/cm²)

Thickness homogeneity:

?

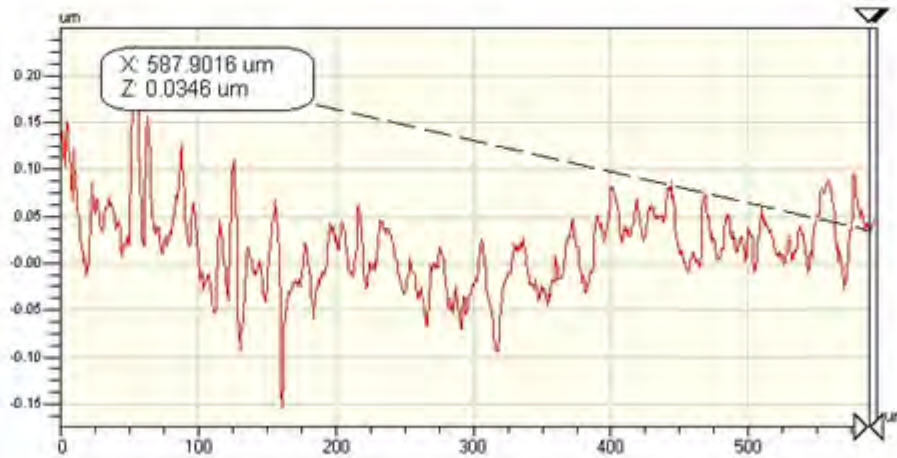
Surface characterisation

Veeco



X	342.28	-	-	um
Y	240.53	-	-	um
Ht	-0.02	-	-	um
Dist		-	-	um
Angle		-	-	°

X Profile



Rq	0.05 um
Ra	0.03 um
Rt	0.39 um
Rp	0.23 um
Rv	-0.16 um

Angle	0.00 mrad
Curve	0.56 m
Terms	None
Avg Ht	0.02 um
Area	10.22 um ²

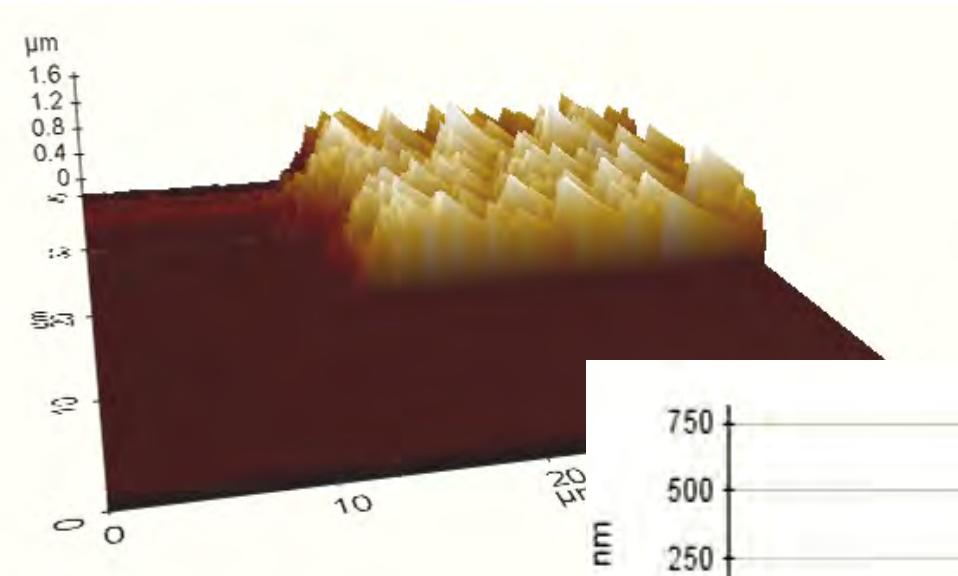
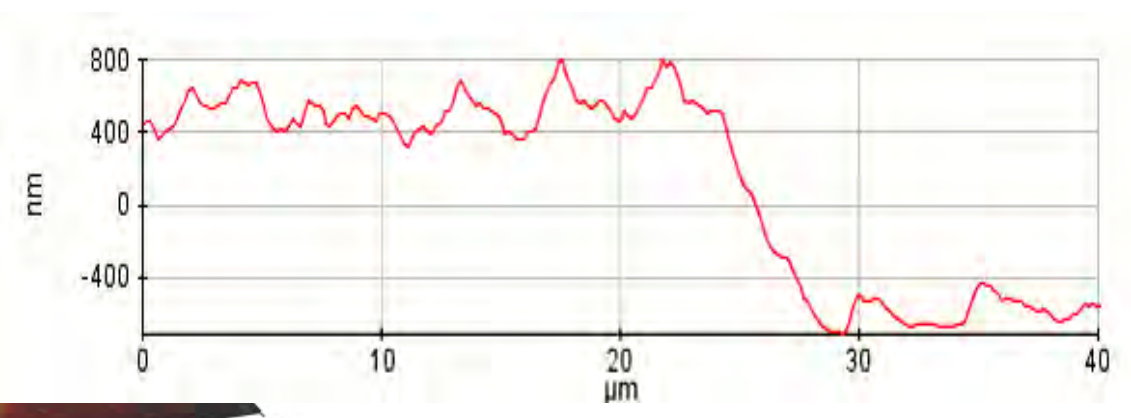
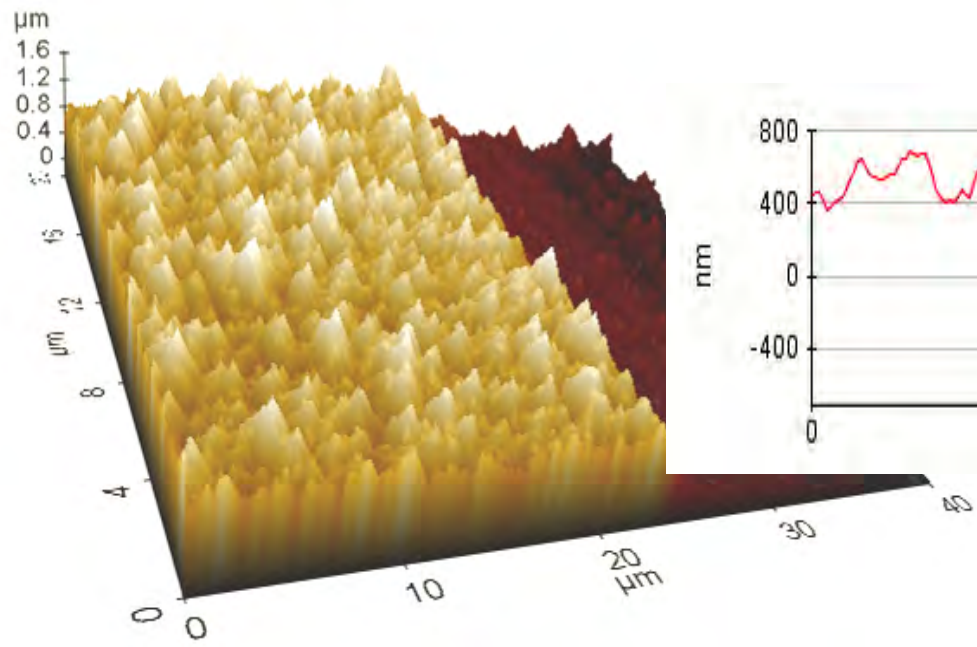
Y Profile



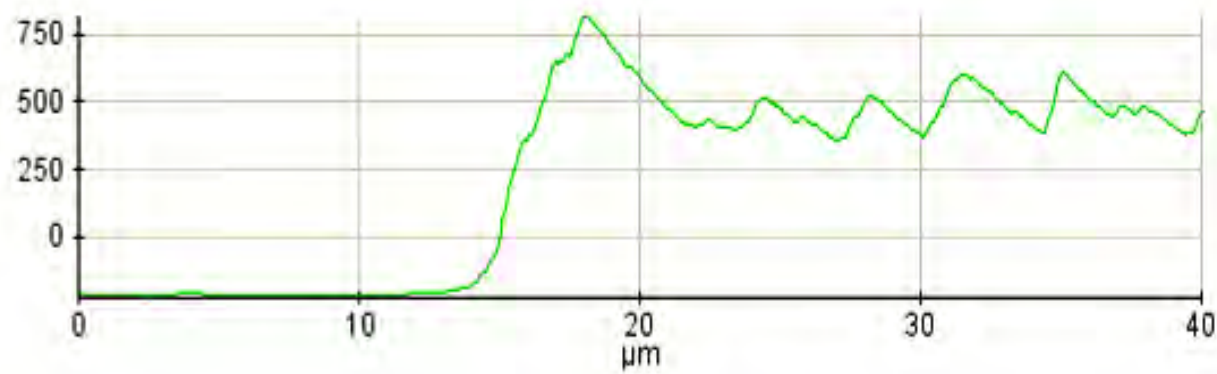
Rq	0.21 um
Ra	0.19 um
Rt	0.65 um
Rp	0.58 um
Rv	-0.07 um

Angle	-2.31 mrad
Curve	22.77 mm
Terms	None
Avg Ht	0.16 um
Area	32.59 um ²

Title:



AFM images of tristearin layer



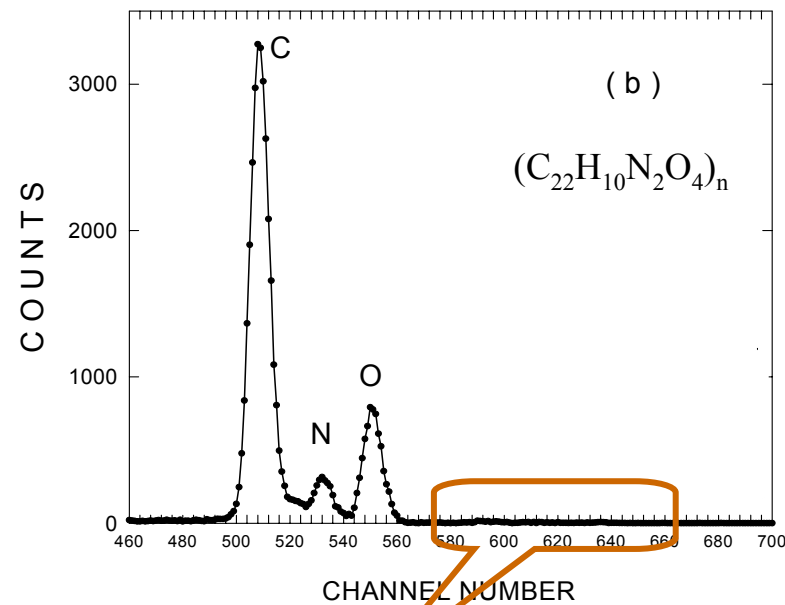
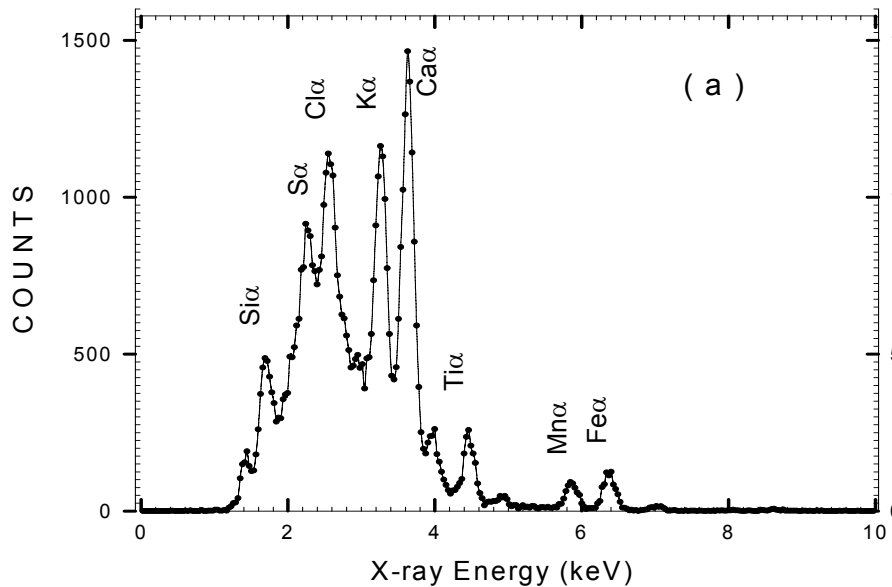
Target characterisation

Thickness: (mass/area i.e. g-mg- $\mu\text{g}/\text{cm}^2$)

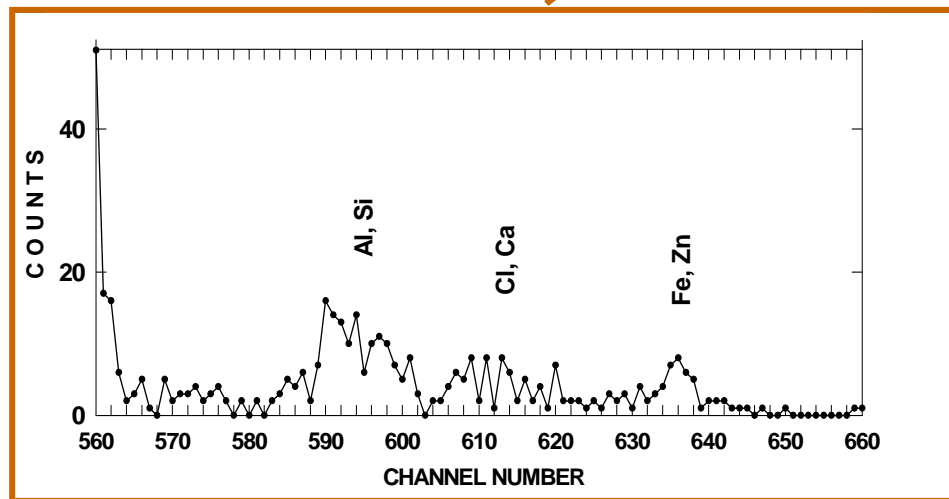
Thickness homogeneity (including surface topography)

Purity/composition

Purity/composition



PIXE spectrum of polyimide foil



Closing advices

When ordering a target define the characteristic needed/significant for planned studies but avoid exaggeration i.e. do not order a target with much better characteristic than really needed. This may cause additional costs and/or ... delay.

element/isotope

thickness, dimensions

supported or not, if yes what can be considered as support

purity

Do not overestimate the importance of the chemical form of the target material.

not always have to be a pure elemental form, the compounds may suite your needs as well but often it is much easier (cheaper) to make the target from compound

Never blindly believe the sample characteristic quoted. Whenever possible check yourself the characteristics which are of essential importance to your experiment.

Discuss with target maker your planned target. Target preparation people can do sometimes more for you than you believe; it is often a question of communication and of raising the relevant problems/aspects.

